

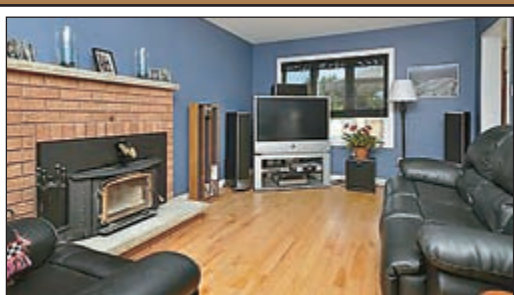
# VISIT OUR TEAM AT [www.therealestatemarket.com](http://www.therealestatemarket.com)

**\$499,900**



### MAKE A GRAND ENTRANCE

Beautiful 1/2 acre lot in Cardinal Woods. Two storey all brick home with great attention to upgrading; Beautiful heated tile floors throughout the foyers, kitchen, breakfast nook and dining room with maple hardwood for the balance of main and upper level. Large eat-in kitchen with walkout to rear deck. Master bedroom with walk-in closet and 4pc ensuite.



**\$236,900**



### CHERISHED TRADITIONS AND SIMPLE PLEASURES

This quaint country property offers 2 bedrooms and 2 baths. Beautiful 1.7 acre lot with mature trees and gardens has been exceptionally well maintained and updated with new roof and carpet in bedrooms, detached drive shed with loft for storage. Property is located with a short drive to skiing, beach and Collingwood.



**\$169,900**



### PERSONAL STYLE

On spacious lot, this detached home (linked at foundation) in Shelburne, features two bedrooms, bright open concept main floor and unfinished basement awaiting your ideas. Convenient, central location on a court.

**\$3,300,000**



### IMAGINE THE POSSIBILITIES

Imagine owning 50 acres of open and rolling land on the outskirts of Orangeville. Property is L-shaped with frontage on Highway #9 and on Second Line Mono in area of Automobile Dealerships and Commercial/Industrial Park. The property features 2 separate homes, tenanted and land rented to farmer.

**\$429,900**



### MAGNIFICENT VIEWS ALL AROUND

This 50 acre beauty is located on the edge of the Pine River Valley, an ideal piece of land for your horses or cattle with spectacular views from its ridge at the rear of the property. Solid two bedroom bungalow set well back from the road for privacy with large country kitchen and open concept living area. Bright walk out basement with large family room and ample storage area.

**\$979,000**



### TERRIFIC LOCATION

Great advantage in Orangeville's Industrial Sector. This 9500 sq ft clear span steel building has 1800 sq ft of office space with mezzanine storage above, 7800 sq ft of open industrial area. Building is fully insulated.

**\$319,900**



### COME HOME TO COUNTRY, BUILD HERE

Captivating and private 29 acre parcel of land located in Mono Township, west of the Hamlet of Camilla, well treed with clearing near the rear where the property elevation is high and has great views to the south and west. Lots of privacy, great location for commuting and paved road.

**\$1,100,000**



### IF YOUR LOOKING FOR A HOME TO RESTORE, THIS IS IT

180 acre farm just minutes from Orangeville. Fertile, productive land currently with potatoes and wheat. The land is high and rolling with pond and mixed bush near the rear. Long laneway leads to classic century brick farmhouse in original condition along with bank barn and detached drive shed.

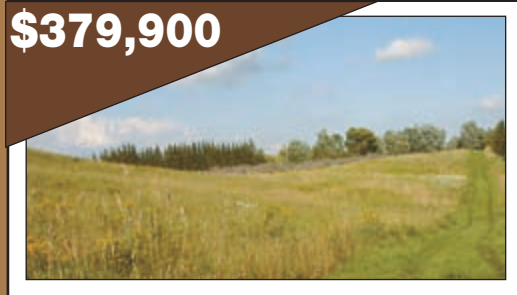
**\$304,900**



### LIKE CHALLENGES?

Ideal opportunity for large lot in mature area of Orangeville. Unique 1+1 bedroom bungalow, featuring large living/dining room, kitchen with walkout to side driveway, large skylight and walkout to rear patio. Bright main floor family room with vaulted ceiling overlooks the private rear yard. Home has 3 fireplaces, including one in the main floor bathroom.

**\$379,900**



### 71.4 ACRE

Don't delay in seeing this outstanding parcel of land located just south of Shelburne on newly paved road, Mono/Amaranth Townline. Rolling land with approximately 30 acres workable, 15 acres hardwood bush, 15 acres mature spruce trees, and 10 acres of open meadow at the road frontage. The property offers multiple sites to build your dream home.

## town & country REALTORS



serving the unique communities of the beautiful headwaters region

### RE/MAX Real Estate Centre Inc. Brokerage

115 First Street, Orangeville  
Each office independently owned & operated

**Doug Schild, Broker**  
**Chris Schild, Sales Representative**  
**Laura Leach, Sales Representative**

your online source

[www.therealestatemarket.com](http://www.therealestatemarket.com)

Office: 519-942-8700 1-800-461-2686  
Email: [info@therealestatemarket.com](mailto:info@therealestatemarket.com)



**\$299,900**



### CHANGE YOUR LIFE, WITH STYLE

Attractive two year old, two storey Sunvale Home showcases some great upgrades. Striking maple kitchen, finished in "truffle" tone, ceramic floor and large walk-in pantry. Features include cathedral ceiling in living room, walkout from family room to rear yard, entrance at foyer to insulated double car garage. Upper level has 4 bdrms plus laundry. Master bdrm has 4 piece ensuite, separate shower and walk-in closet.



**\$129,900**  
**\$149,900**



### DON'T RENT IT, OWN IT!

An exceptional opportunity to buy new 1 bedroom condo in Orangeville, 3 units to choose from starting at \$129,900. Features include spacious kitchen with lots of cupboard space and bright living room. One unit has ensuite laundry area. Close to shopping and town bus route.



**\$339,900**



### PEACEFUL SETTING

Spacious and well maintained home on private road in Mono. Lots of trees with creek winding through rear. Large principal rooms on main level plus huge basement with 3 walkouts perfect for large or extended family. New side deck, private patio, lovely gardens and mature trees. The home also features master bedroom with 4pc ensuite, 2 gas fireplaces.

**\$160,000**



### WANT A CHALLENGE, BUILD YOUR OWN

Opportunity to build on this 5 acre lot with two road frontages and located on paved road. This lot is bordered with mature evergreens providing a beautiful setting.

**\$324,900**



In a peaceful setting this country bungalow with walkout basement is situated on 200'x300' lot. Bright eat-in kitchen, large living room with woodstove and walkout to rear deck with hottub and gazebo. Features 3 bedrooms on main floor, master has 4 pce ensuite with his/hers closets. Walkout basement with large rec room, woodstove and wet bar.

**\$84,900**



### SMALL WONDERS

The peace and quiet of Maple Grove Village is a great setting for this 3 bedroom, 2 bathroom mobile home. Features a great lot with no neighbours behind, family room with walkout to deck, step up to living room and spacious kitchen with walkout to side deck. Master bedroom has combined 3pc ensuite and laundry room. Home also features garden shed and spacious deck with hottub.

**\$499,900**



### CAPTIVATING VIEWS

Lovely maintained, this exceptional 4 bedroom home will not disappoint you. Set on 7.4 acres, including paddock and run-in shed for your 4 legged friends. Features large open concept kitchen/family room area with walkout to rear deck along with the classic elegance of a formal dining room. Convenient main floor laundry with access to double garage.

**\$695,000**



### FOR ALL THOSE WHO WON'T ABIDE THE ORDINARY

Pastoral setting and the ultimate in privacy, 99.5 acres, swimming pond, quaint country home, detached garage, separate storage/workshop 20'x40', & trails throughout this wooded property. Featuring lovely all-season sunrm, spacious fam rm w/woodburning fp, huge dining rm perfect for entertaining. A sprawling master bdrm complete with fireplace, 5pc ensuite, whirlpool tub & sep. shower. And the list goes on...

**\$10<sup>00</sup> PER SQ FT**



### THINKING OF OWNING YOUR OWN BUSINESS

This 3000 sq ft Multi-Use building in Shelburne is visible from County Rd 124. There is 250 sq ft reception area, 210 sq ft office area and balance of area is 3 bay garage. The loft storage is approximately 300 sq ft., small lunch room/kitchenette and two bathrooms.

**\$349,900**



### THE POSSIBILITIES ARE GRAND

An exceptional 46.44 acre parcel of land in south Mulmur offering great views, open meadow, small bush and pond site. Property is located in jurisdiction of Niagara Escarpment Commission with approval for building of a home.

**\$339,900**



### PERSONAL STYLE

You're gonna love this kitchen! A sprawling updated and contemporary design with loads of storage, counter space and dining area with walkout to tiered deck and fenced rear yard. Curved staircase leads to 3 bedrooms, master with walkin closet & 2nd closet as well as 4pc ensuite. Immaculate and well maintained, partially finished basement includes a rec room and guest room with 3pc ensuite bath.



**\$649,900**



### A PLACE FOR THE FAMILY & INCOME TOO

Attractive 24 acre property with convenient highway access, 2 ponds, well treed and open meadow with water hydrant. Large two storey home divided into 2 separate living areas, inground pool, attached oversized double garage, detached double garage and separate 2 storey steel storage building with finished workshop inside.