

# town & country REALTORS



servicing the unique communities of the beautiful headwaters region

## RE/MAX Real Estate Centre Inc. Brokerage

115 First Street, Orangeville  
Each office independently owned & operated

**Doug Schild, Broker**  
**Chris Schild, Sales Representative**  
**Laura Leach, Sales Representative**

your online source

[www.therealestatemarket.com](http://www.therealestatemarket.com)

Office: 519-942-8700 1-800-461-2686  
Email: [info@therealestatemarket.com](mailto:info@therealestatemarket.com)



**\$529,900**



### CALEDON COUNTRYSIDE

Own this lovely country property, wide front porch overlooks mature perennial gardens, perfect for relaxing. Foyer is open to second floor and leads to spacious kitchen with centre island and walkout to huge rear deck. Main floor laundry/mudroom with access to double garage. Home features 3 bedrooms, master with walkin closet and 4pc ensuite bath, basement with finished recroom, woodburning stove and separate storage/utility room.

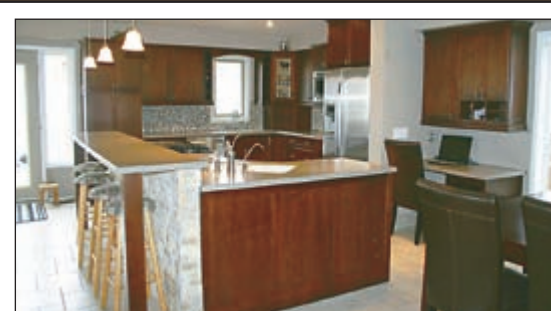


**\$329,900**



### LOTS OF SPACE FOR GROWING FAMILY!!

One of the largest models in the neighbourhood. Fabulous new kitchen, complete with built-in stainless steel appliances, huge island/breakfast counter, 2 sink/preparation areas, tile floor & backsplash, built in desk and large dining area. Second floor includes huge master bedroom suite with walkin closet and 5 piece bath with soaker tub. This floor also features a bright, spacious family room. Kids will enjoy having the third floor bedrooms to themselves along with 4 piece bath and ample storage.



**\$649,900**



### YOU'LL LOVE THE VERY NATURE OF IT!

Great location for this 91 acre farm, on paved County Road between Orangeville and Fergus. Corner farm, high and rolling land with approximately 70 acres workable, 5 acres of hardwood bush, 8 acres of cedar bush and balance in pasture land. Features 3 bedroom farmhouse, detached steel driveshed approx 54'x100' with 2-18' doors, 2 vehicle doors, hydro and water. Original bank barn, approx. 60' x 80' with hydro and water available.



**\$635,000**



### 100 ACRE FARM-RETREAT TO PRIVACY!

Pastoral setting and the ultimate in privacy, 99.5 acres, pond, quaint country home, detached garage, separate storage/workshop 20'x40', & trails throughout this wooded property for hiking, snowmobiling or skiing. Captivating home featuring lovely all-season sunrm, spacious fam rm w/woodburning fp, huge dining rm perfect for entertaining. A sprawling master bdrm with fireplace, 5 pc ensuite, whirlpool tub & sep. shower. And the list goes on...



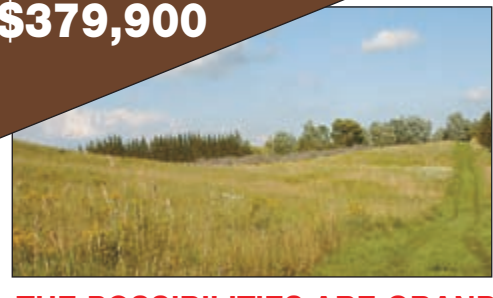
**\$ 349,900**



### BRING YOUR IMAGINATION!

Start planning now to build your dream home in the spring. An exceptional 46.44 acre parcel of land in south Mulmur offering great views, open meadow, small bush and pond site.

**\$379,900**



### THE POSSIBILITIES ARE GRAND

Don't delay in seeing this outstanding parcel of land located just south of Shelburne on newly paved road, Mono/Amaranth Townline. Rolling land with approximately 30 acres workable, 15 acres hardwood bush, 15 acres mature spruce trees, and 10 acres of open meadow at the road frontage. The property offers multiple sites to build your dream home.

**\$229,900**



### OUTSTANDING VIEWS OF ORANGEVILLE

Don't delay in seeing this lovely 6th floor corner unit condo in the Bromont. Very well maintained & presented, it features 2 bedrooms, bright kitchen with north window, bathroom with walkin shower/tub with air jets, neutral décor & updated flooring. Dining room walks out to balcony with great view of Island Lake. Call us for details.



**\$269,900**



### PRIVATE YARD

Great opportunity for home with fabulous yard backing on conservation land. Well maintained and presented this home features 3 bedrooms, 3 bathrooms and finished walkout basement. Well updated including hardwood flooring in livingroom, front windows & door, carpet in bedrooms, updating in bathrooms, counter in kitchen and the list goes on.

**\$239,900**



### BUILD THAT HOME YOU ALWAYS WANTED!

Look no farther for a country property that features a large pond, approximately 1 acre in size with a sand beach area and floating dock with slide and a windmill for aeration. For your fishing pleasure, the pond has been stocked with rainbow trout. The property offers a small cabin approximately 12'x16', portable garage and dirtbike track. Mixture of cedar, ash and pine trees, 6-8 acres of hay with balance of 12-14 acres cash crop.

**\$149,900**



**FOR SALE**  
**VACANT LAND**

### 49 ACRES!

Imagine the possibilities! This 49 acre parcel of land is fronting on Highway #10, level and open, north of Shelburne

**\$469,900**



### INVESTMENT OPPORTUNITY!

Own one of the finest buildings in Shelburne. This property offers a six-plex all individually metered plus a detached 3 car garage, 1 Bachelor Apt. 2-Two Bedroom Apts. and 3-One Bedroom Apts. updated kitchens and bathrooms, all offering new appliances.

**\$639,900**



### A PLACE FOR THE FAMILY AND INCOME, TOO!

Attractive 24 acre property with convenient highway access, 2 ponds, well treed and open meadow with water hydrant. Large two storey home divided into 2 separate living areas, inground pool, attached oversize double garage, detached double garage and separate 2 storey steel storage building with finished workshop inside.

**\$990,000**



### CHARACTER OF YESTERYEAR!

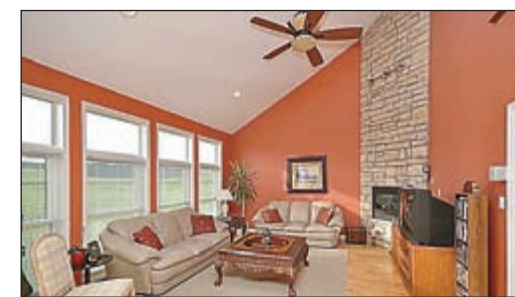
Just minutes from Orangeville, 180 acres fertile, productive land used for potatoes and wheat. The land is high and rolling with pond and mixed bush near the rear. Long laneway leads to classic century brick farmhouse in original condition along with bank barn and detached drive shed.

**\$499,900**



### 7.4 ACRES SET AMONGST ROLLING HILLS

Lovingly maintained, this exceptional 4 bedroom home will not disappoint you. Set on 7.4 acres, including paddock and run-in shed for your 4 legged friends. Features large open concept kitchen/family room area with walkout to rear deck along with the classic elegance of a formal dining room. Convenient main floor laundry with access to double garage.



**\$699,000**



### FAMILY FARMHOUSE!

Great opportunity to own 166 acres of land, located on Highway #10 just north of Shelburne. Approximately 145 workable acres with 10 acres of mixed bush. Features a 4 bedroom bungalow home with unfinished basement. Large bank barn has water and hydro, separate driveshed and silo.

**\$209,900**



### CHARMING BUNGALOW

Great opportunity on the Main St. in Shelburne, with additional rear lane access and large mature lot. Immaculate and well maintained with updates throughout. Features beautiful engineered hardwood floors in living room and den. There is a lovely 3 season sunroom and large new rear deck.

**\$639,900**



### PERFECT FOR EXTENDED FAMILY

Country living just minutes from Orangeville. This 3 bedroom home features large principal rooms as well as a finished recroom in basement plus, a self contained inlaw suite with separate entrance is found on the 2nd floor-it offers a kitchen, livingroom, washroom & ensuite laundry. Situated on 1.24 acres, the lot offers mature trees, privacy and rural living.

**\$389,900**



### NEARING COMPLETION!

Exciting opportunity to pick the finishing touches to this brand new home being built by Jamieson Construction. Beautiful 4 level backsplit, open concept main level, 2 bedrooms upstairs, master with semi ensuite bathroom. Lower level roughed in with family room, 3rd bedroom and bathroom. All enjoyment of country living but with minimal lawn to maintain.

**\$319,900**



### NEW BEGINNINGS-BUILD HERE

Captivating and private 29 acre parcel of land located in Mono Township, west of the Hamlet of Camilla, well treed with clearing near the rear where the property elevation is high and has great views to the south and west. Lots of privacy, great location for commuting and paved road.

**\$85,000 + Stock**



### BE YOUR OWN BOSS!

If you have a flair for colour, try your hand at this well established business in Orangeville. Owner willing to train. Contact us for further information.



**VISIT OUR TEAM AT [www.therealestatemarket.com](http://www.therealestatemarket.com)**