

\$259,900



ALTON UNITED CHURCH - OWN A BIT OF THE AREA'S HISTORY!
Great opportunity to own this beautiful red brick Church located in Alton which backs onto ravine and tributary of the Credit river. Structure has been very well maintained and features cathedral ceiling on main floor, full finished basement with separate side entrance, separate kitchen, large recreation room and 2-2 piece bathrooms. Side parking lot is paved.

\$329,900



46.44 ACRES WITH GREAT VIEWS
Start planning now to build your dream home in the spring. An exceptional 46.44 acre parcel of land in south Mulmur offering great views, open meadow, small bush and pond site.

\$849,000



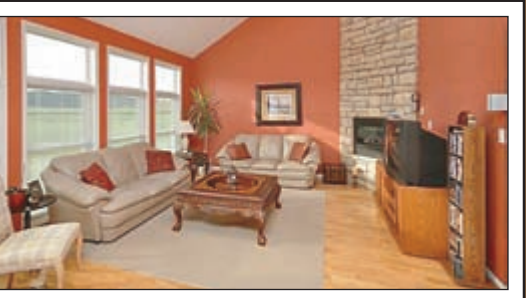
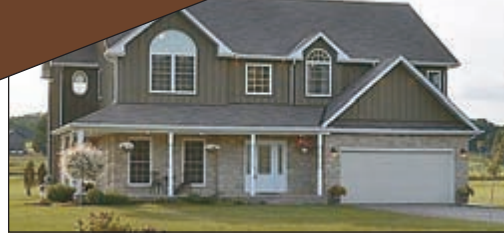
BE A LANDLORD AND PROFIT!
Solid 8-plex building, 4 large 2 bedroom apartments, 4-1 bedroom apartments. The apartments are separately metered and located in great neighbourhood. Recent upgrades, new roof, windows and sliding doors, 7 kitchen and bath reno's hydro meters and much more.

\$449,900



5 ACRE PROPERTY ON PAVED ROAD
Private and charming property with two ponds, mature landscaping, detached 30'x30' workshop (insulated & heated with wood furnace). Features a 3 bedroom brick bungalow, overlooking pond. Main floor laundry with 2 piece powder room, master bedroom has 3 piece ensuite bathroom. Living room has beautiful wood floors and propane fireplace. Finished basement includes 2 additional guest rooms/office and recreation room with wood fireplace insert. Property also has separate 24'x40' storage building and small cabin by pond.

\$499,900



7.4 ACRES IN THE HILLS OF MULMUR
This beautiful 4 bedroom home will not disappoint you. Set in the rolling hills of Mulmur with a paddock and run-in shed. Immaculate and well maintained this home is well back from road and features a welcoming wrap-around porch and insulated, double car garage. Features large open concept kitchen/family room area with walkout to rear deck along with the classic elegance of a formal dining room. Convenient main floor laundry with access to double garage.

\$499,900



ENCHANTING 24 ACRE PROPERTY
Modern French farmhouse in a dramatic 24 acre hilltop setting with outstanding views over Hockley Valley. This sprawling home was designed with great attention to detail, quality Mennonite construction and luxurious amenities. A fabulous family home or weekend retreat, with over 5,000 sq. ft. of living space, 6 beautiful bedrooms, all with ensuite baths, an extensive list of features as well as 270 yard single hole golf practice facility. Contact us for full details.

\$1,399,000



ENCHANTING 24 ACRE PROPERTY
Modern French farmhouse in a dramatic 24 acre hilltop setting with outstanding views over Hockley Valley. This sprawling home was designed with great attention to detail, quality Mennonite construction and luxurious amenities. A fabulous family home or weekend retreat, with over 5,000 sq. ft. of living space, 6 beautiful bedrooms, all with ensuite baths, an extensive list of features as well as 270 yard single hole golf practice facility. Contact us for full details.

\$134,500



BE A HOME BUYER!
A beautiful townhouse for you who want a more maintenance free home. In seeing this 4 bedroom townhouse located in Shelburne. The home features ceramic foyer leading to a large open living/dining room with hardwood floors and main floor powder room. Walkout from living room to fenced yard and patio. Upstairs features 4 bedrooms including spacious master bedroom with walkin closet.

\$411,000



JUST IN TIME TO DECORATE!
Exciting opportunity to pick the finishing touches to this brand new home being built by Jamieson Construction. Beautiful 4 level backsplit, open concept main level, 2 bedrooms, upstairs, master with semi ensuite bathroom. Lower level family room with laundry and walkout to yard. All the enjoyment of country living but with minimal lawn to maintain.

\$895,000



ENCHANTING PROPERTY WITH 2 HOMES ON 38 ACRES!
Enjoy two beautiful homes at one address secluded from paved road by towering trees. The main house built in 2003 enjoys multiple walkouts from main level and finished walkout basement. Featuring a spacious entrance with slate floors, gourmet kitchen with large centre island. Lovely open concept perfect for entertaining. Plus, original 2 bedroom home renovated and attached to main house by sunroom features kitchen with walkout to yard and cozy living room with gas fireplace. Outstanding saltwater pool & patio area, large spring fed pond & trails throughout the wooded grounds.

\$224,900



POSTCARD SETTING ON 49 ACRES!
Look no farther for a country property that features a large pond with a sand beach area and floating dock with slide and a windmill for aeration. For your fishing pleasure, the pond has been stocked with rainbow trout. The property offers a small cabin approximately 12'x16', portable garage and dirt bike track. Mixture of cedar, ash and pine trees, 6-8 acres of hay plus 21 acres cash crop.

VISIT OUR TEAM AT www.therealestatemarket.com

\$139,900



PRIVACY AND GREAT VIEWS!
A perfect combination for your next building site, located on a quiet cul de sac near Hornings Mills. This private 4.69 Acre Lot is sure to please. Features well treed area along with open meadow, property has narrow frontage on fieldway court leading to property. Property under NVCA & NEC, owner has current building Permit from NEC.

\$574,900



88.7 ACRES IN MULMUR
This beautiful century homestead set well back from a paved road features approximately 88.7 acres of rolling land with great views to the east, century farmhouse, bank barn, large workshop/driveshed 40'x60' with overhead door and sliding door & detached garage. Home features large principal rooms and updated windows throughout. 78 acres workable land.

\$689,900



COUNTRY FARMHOUSE PURE & SIMPLE!
Great opportunity to own 166 acres of land, located on Highway #10 just north of Shelburne. Approximately 145 workable acres with 10 acres of mixed bush. Features a 4 bedroom bungalow home with unfinished basement. Large bank barn has water and hydro, separate driveshed and silo.

\$99,900



49 ACRES!
This property has possibilities. It is fronting on Highway #10, level and open and north of Shelburne. It also has potential as a recreational property and is eco energy friendly.

\$259,900

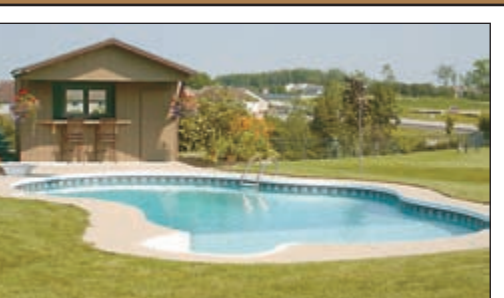


JUST THE PERFECT SIZE
A winning combination for commuter, great location and well maintained bungalow on spacious lot. Quaint and cozy two bedroom bungalow plus finished basement including third bedroom, recreation room and exercise room/office. This immaculate home is ready to move in!

\$514,900



MAKE A SPLASH!!
Don't miss out in seeing this home on over a 1/2 acre in town. Backyard overlooks conservation and walking trails. Inground pool with cabanna/change house, private hot tub area & lots more room to play! Spacious raised bungalow features open concept main floor, hardwood floors, eat-in kitchen, breakfast counter and walkout to upper decks. Master has 2 closets & 4 pce ensuite with corner soaker tub. Finished walkout basement with large family room, 4th bedroom/office with separate walkout to yard.



29 ACRES TO BUILD YOUR DREAM HOME!
Captivating and private 29 acre parcel of land located in Mono Township, west of the Hamlet of Camilla, well treed with clearing near the rear where the property elevation is high and has great views to the south and west. Lots of privacy, great location for commuting and paved road.

\$319,900



\$524,900



PERFECT COUNTRY PACKAGE - 2 ACRES!
Enjoy this beautiful property located on a paved road, just 10 minutes from Orangeville. The property offers mature trees, gardens & interlock walkway to quaint front porch. This well maintained home features open concept on main floor with rear kitchen and dining room with walkout to deck and 24ft. above-ground pool, great for entertaining family and friends. Spacious family room with Napoleon woodburning fireplace. Work in your own 30ft.x40ft. workshop located at rear of property with hydro, water, floor drains and 10' & 12' doors.



91 ACRES OF COUNTRY LIVING!
Great location for this 91 acre farm, on paved County Road between Orangeville and Fergus. Corner farm, high and rolling land with approximately 70 acres workable, balance in pasture land and mixed bush. Features 3 bedroom farmhouse, detached steel driveshed approx 54'x100' with 2-18' doors, 2 vehicle doors, hydro and water. Original bank barn, approx. 60' x 80' with hydro and water.

\$649,900



24 ACRES FOR FAMILY & INCOME TOO!
Attractive 24 acre property with convenient highway access, 2 ponds, well treed and open meadow with water hydrant. Large two storey home divided into 2 separate living areas, inground pool, attached oversize double garage, detached double garage and separate 2 storey steel storage building with finished workshop inside.

\$569,900



town & country REALTORS serving the unique communities of the beautiful headwaters region



RE/MAX Real Estate Centre Inc. Brokerage
115 First Street, Orangeville
Each office independently owned & operated
Doug Schild, Broker
Chris Schild, Sales Representative
Laura Leach, Sales Representative

your online source
www.therealestatemarket.com

Office: 519-942-8700 1-800-461-2686
Email: info@therealestatemarket.com

